

340-CFD00-2

MOD	LOCATION	CHANGE REFERENCE	DATE	SIGN
1				

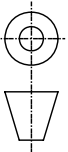
Dimension	Tol	Angle (Shortest adjacent side in mm)	Tol
(6) - 30	+0.10	10	± 1'
(30) - 120	+0.20	15	± 30'
(120) - 315	+0.30	20	± 20'
(315) - 1000	+0.50	25	± 10'

REFERENCE	MODIFICATION	ABCDEFGHIJKLMNPRSTUVWXYZ
	DESIGN OFFICE	DRAWING NUMBER
	HSK63A-SDUCL-13090-11	

show a detail over the complete line of an item and its end to be covered when the drawing is cut down. The drawing shows the portion of the SHANK (DOWN)

100 mm 90 80 70 60 40 30 20 10 0

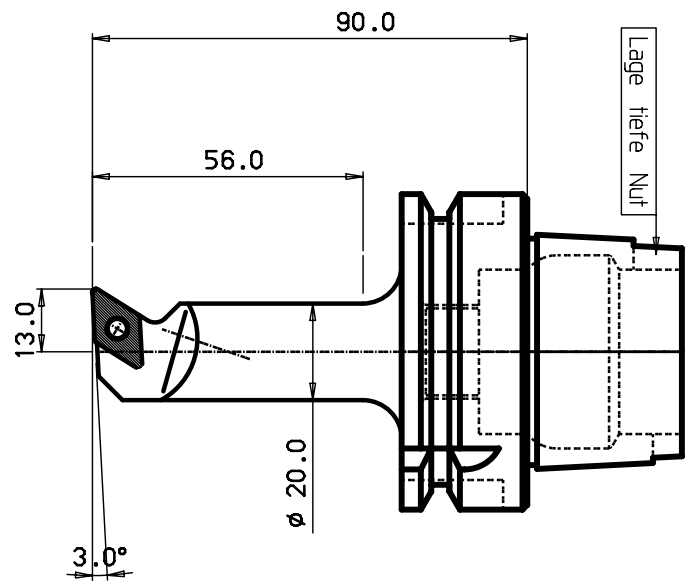
MICROFILMED



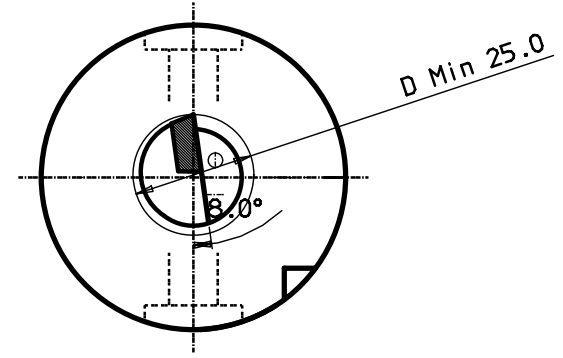
340-CFD00-2

1	2	V 3	4	5	6	7	8
---	---	-----	---	---	---	---	---

DESIGN OFFICE	DRAWING NUMBER
---------------	----------------



HSK 63 -A



HM-Platte DCMT 11T308

ITEM	QNTY	DESCRIPTION	MATERIAL AND REMARKS	RELATED DRAWING	UNIT	SIZE
2	1	Schraube f. Platte				
1						

CATEGORY	DESIGNED	DRAWN	CHECKED	DATE	SCALE	SUPERSEDES
----------	----------	-------	---------	------	-------	------------

TITLE	Schneidkopf		
REFERENCE	MODIFICATION	ABCDEFGHIJKLMNPRSTUVWXYZ	

DESIGN OFFICE	DRAWING NUMBER
	HSK63A-SDUCL-13090-11

MOD	LOCATION	CHANGE REFERENCE	DATE	SIGN
1				

Tolerance systems acc to ISO
Surface roughness Ra um

Where tolerance not stated:
For threads SS-iso 965/3
For dimensions SS 715 Medium

Dimension	Tol	Angle (Shortest adjacent side in mm)	Tol
(6) - 30	+0.10	10	± 1'
(30) - 120	+0.20	15	± 30'
(120) - 315	+0.30	20	± 20'
(315) - 1000	+0.50	25	± 10'

A
B
C
D
E
F